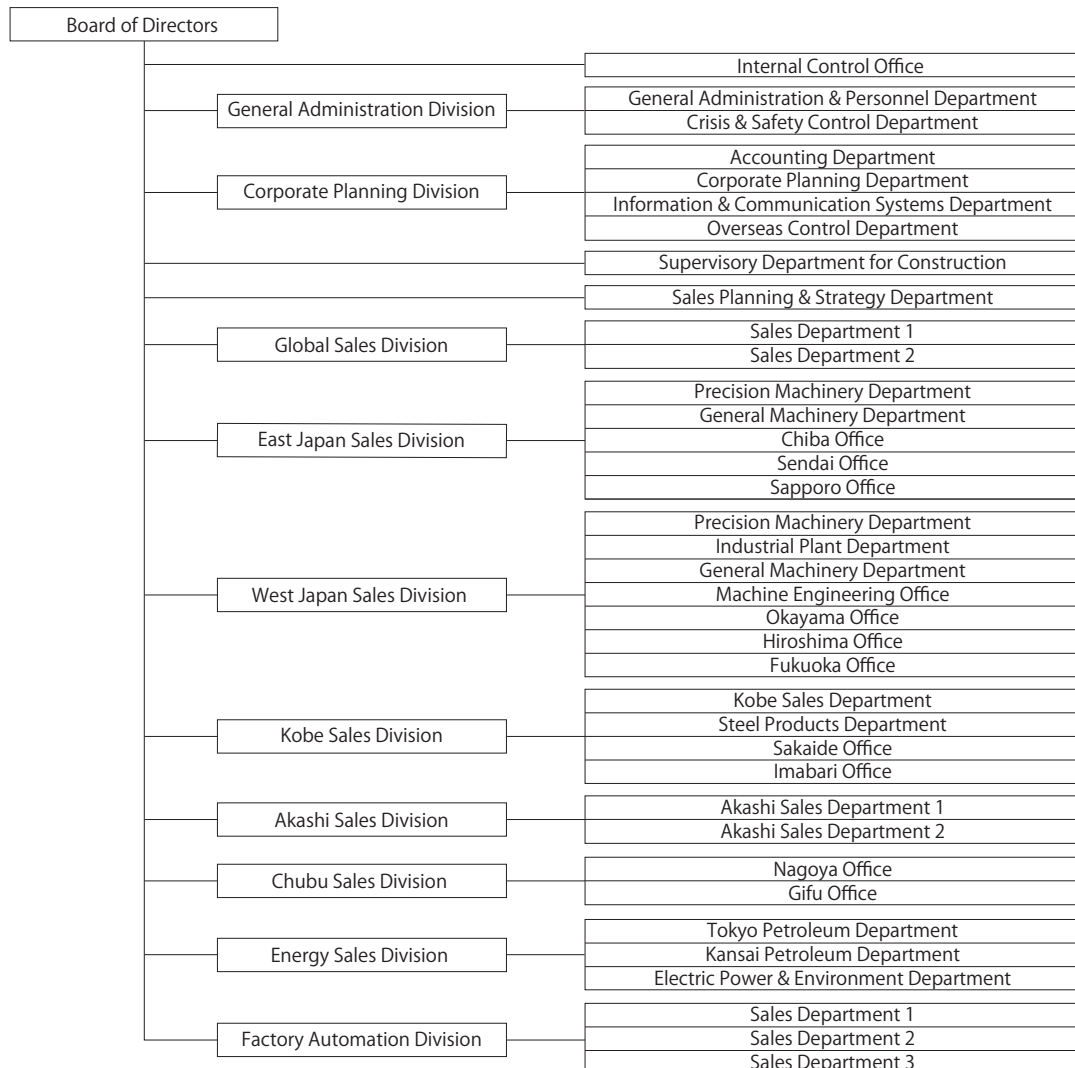


**Company Data**

Company Name	Kawasaki Trading Co., Ltd.
Establishment	June 28, 1951
Head office	[Kobe Head Office] 3rd Floor, Shinko Bldg., 8, Kaigan-dori, Chuo-ku, Kobe, Hyogo 650-0024, Japan Tel:+81-78-392-1131 Fax:+81-78-333-4390 [Tokyo Head Office] 5th Floor, Takebashi Yasuda Bldg., 13, Kanda-nishikicho 3-chome, Chiyoda-ku, Tokyo 101-0054, Japan Tel:+81-3-6744-1000 Fax:+81-3-6744-1100
President	Satoru Korai
Capital stock	600 million yen
Sales	85,926 million yen (result for the financial year ended March 2024)
Transaction Volume	148,082 million yen
Contents of Business	1. Sale, import and export of industrial equipment 2. Sale of energy and environmental products 3. Sale of steel and construction materials and products 4. Contracting of construction work 5. Aftercare services and maintenance
Main Shareholders	Kawasaki Heavy Industries, Ltd. Kawasaki Kisen Kaisha, Ltd. Idemitsu Kosan Co., Ltd.
Main Banks	Mizuho Bank, Ltd. Sumitomo Mitsui Banking Corporation MUFG Bank, Ltd.
Employees	386 (as of Mar 31, 2024)

**Board Members**

President	Satoru Korai
Managing Director	Ikuo Ogata
Director	Hirofumi Kawamura
Director	Akio Minami
Director	Takeshi Sasaki
Director	Masayoshi Aoki
Audit & Supervisory Board Member	Goro Takahashi
Audit & Supervisory Board Member (part-time)	Takuji Oshiro
Audit & Supervisory Board Member (part-time)	Kazuhsa Igaki

**Organization Chart**


**Kawasaki Trading Co., Ltd.**
**Domestic Offices**

Kobe Head Office	3rd Floor, Shinko Bldg., 8, Kaigan-dori, Chuo-ku, Kobe, Hyogo 650-0024, Japan TEL: +81-78-392-1131 FAX: +81-78-333-4390
Tokyo Head Office	5th Floor, Takebashi Yasuda Bldg., 13, Kanda-nishikicho 3-chome, Chiyoda-ku, Tokyo 101-0054, Japan TEL: +81-3-6744-1000 FAX: +81-3-6744-1100
Osaka Office	12th Floor, Seiwa Umeda Bldg., 12-7, sonezaki 2-chome, Kita-ku, Osaka 530-0057, Japan TEL: +81-6-6360-3151 FAX: +81-6-6361-2830
Sapporo Office	14th Floor, JR Tower Office Plaza Sapporo Bldg., 5, Kita-5-jo-nishi 2-chome, Chuo-ku, Sapporo, Hokkaido 060-0005, Japan TEL: +81-11-281-2677 FAX: +81-11-281-2688
Muroran Office	5-3, Kouhokucho 1-chome, Muroran, Hokkaido 050-0063, Japan TEL: +81-143-55-1051 FAX: +81-143-55-1052
Mizusawa Office	152, Shuku, Aza, Odaki, Esashi, Oshu, Iwate 023-1131, Japan TEL: +81-197-31-2950 FAX: +81-197-34-2155
Sendai Office	16th Floor, Tokyo Tatemono Sendai Bldg., 6-35, Chuo 1-chome, Aoba-ku, Sendai, Miyagi 980-0021, Japan TEL: +81-22-227-2277 FAX: +81-22-227-2196
Chiba Office	12-10, Imai 2-chome, Chuo-ku, Chiba 260-0834, Japan TEL: +81-43-261-5265 FAX: +81-43-263-4062
Keihin Office	3rd Floor, Nihon Seimei kawasaki Bldg., 1-1, Minami-machi, Kawasaki-ku, Kawasaki, Kanagawa 210-0015, Japan TEL: +81-44-221-0451 FAX: +81-44-221-0452
Chita Office	3rd Floor, Izumi Bldg., 1-4, Izumi-cho, Handa, Aichi 475-0858, Japan TEL: +81-569-22-2827 FAX: +81-569-22-7019
Nagoya Office	8th Floor, Horiuchi Bldg., 25-9, Meieki 3-chome, Nakamura-ku, Nagoya, Aichi 450-0002, Japan TEL: +81-52-586-7271 FAX: +81-52-586-7275
Gifu Office	4th Floor, Kawakyo Study Center, 17-1, Soharakoua-machi 1-chome, Kakamigahara, Gifu 504-0814, Japan TEL: +81-58-382-3530 FAX: +81-58-371-1375
Machine Engineering Office	15th Floor, Sumitomo Seimei OBP Plaza Bldg., 4-70, Shiromi 1-chome, Chuo-ku, Osaka 540-0001, Japan TEL: +81-6-6910-7551 FAX: +81-6-6910-7552
Kobe Office	5th Floor, No.3 Bldg., 1-1, Higashi-kawasaki-cho 3-chome, Chuo-ku, Kobe, Hyogo 650-0044, Japan TEL: +81-78-651-8970 FAX: +81-78-681-0009
Akashi Office	5th Floor, Nishiakashi Spot Bldg., 6-8, Matsunouchi 2-chome, Akashi, Hyogo 673-0016, Japan TEL: +81-78-922-2645 FAX: +81-78-922-7001
Kakogawa Office	753-19, Aza Imai, Hiraoka-cho Tsuchiyama, Kakogawa, Hyogo 675-0104, Japan TEL: +81-79-420-7581 FAX: +81-79-420-7582
Okayama Office	108-2, Shinkurashiki-ekimae 1-chome, Kurashiki, Okayama 710-0253, Japan TEL: +81-86-523-5070 FAX: +81-86-523-5071
Sakaide Office	1, Kawasaki-cho, Sakaide, Kagawa 762-0062, Japan TEL: +81-877-46-3823 FAX: +81-877-46-6124
Hiroshima Office	6th Floor, JEI Hiroshima Hacchobori Bldg., 14-4, Hacchobori, Naka-ku, Hiroshima 730-0013, Japan TEL: +81-82-212-0250 FAX: +81-82-211-5600
Sanin Office	6th Floor, International Family Plaza, 180, Kamocho 2-chome, Yonago, Tottori 683-0823, Japan TEL: +81-859-23-3111 FAX: +81-859-23-3112
Imabari Office	6th Floor, Maemi Bldg., 5-3, Kitahorai-cho 1-chome, Imabari, Ehime 794-0028, Japan TEL: +81-898-22-6122 FAX: +81-898-33-2281
Fukuoka Office	5th Floor, Hakata FD Business Center, 2-1, Tsunaba-machi, Hakata-ku, Fukuoka 812-0024, Japan TEL: +81-92-260-9926 FAX: +81-92-260-9927
Remote Information Center (RIC)	1st Floor, As One Higashi-Kamata Residence, 21-15, Higashi-Kamata 1-chome, Ota-ku, Tokyo 144-0031, Japan TEL: +81-3-6744-1007 FAX: +81-3-6744-1004

**Overseas Offices**

Manila Office	Room 817 Peninsula Court Bldg., 8735 Paseo de Roxas corner Makati Avenue Makati City 1226, The Philippines TEL: +63-2-8869-0947
Hong Kong Office	Unit B, 20th Floor, Redana Centre, 25 Yiu Wa Street, Causeway Bay, Hong Kong TEL: +852-2812-0004 FAX: +852-2812-2281
Kaohsiung Office	Room A1, 4th Floor, 6 Swei 3rd Road, LingyaChiu, Kaohsiung 802, Taiwan TEL: +886-7-330-0937 FAX: +886-7-330-0940
Ho Chi Minh Office	Room C-15, 25th Floor, Lim Tower, 9-11 Ton Duc Thang Street, Ben Nghe Ward, District.1, Ho Chi Minh City, Vietnam TEL: +84-28-3821-0872 FAX: +84-28-3821-0873
Singapore Office	Kawasaki Heavy Industries (Singapore) Pte. Ltd. 6 Battery Road, #17-02, Singapore 049909 TEL: +65-6225-5133 FAX: +65-6224-9029
Detroit Office	39111 Six Mile Road, Livonia, Michigan 48152, USA TEL: +1-734-779-1885

**Kawasaki Trading (Shanghai) Co., Ltd.**

## Overseas Subsidiaries

Head Office	Room 1003B, Chong Hing Finance Center, No.288 Nanjing Road West, Shanghai 200003, China TEL: +86-21-3366-3700 FAX: +86-21-3366-3701
Dalian Office	Room 319, No.712-5 Shunle Street, Lvshun Economic Development Zone, Dalian 116052, China
Nantong Office	Room 2707-2708, Phoenix Cultural Plaza Bldg. 2, No.6 Xinchengu Branch Slip Rd, Chongchuan District, Nantong 226004, China TEL: +86-513-8558-0979 FAX: +86-513-8558-0379

**Kawasaki Trading (Thailand) Co., Ltd.**

## Overseas Subsidiaries

Head Office	1 Park Silom Tower, 15th Floor, Room 1502, Convent Road, Silom, Bangrak, Bangkok, 10500, Thailand TEL: +66-2-124-5623 +66-2-077-5822
-------------	---

**Kawasaki Green Energy Co., Ltd.**

## Domestic Affiliated Company

Head Office	1-1, Higashikawasaki-cho 3-chome, Chuo-ku, Kobe, Hyogo 650-8670, Japan TEL: 078-682-5227 FAX: 078-682-5533
-------------	---