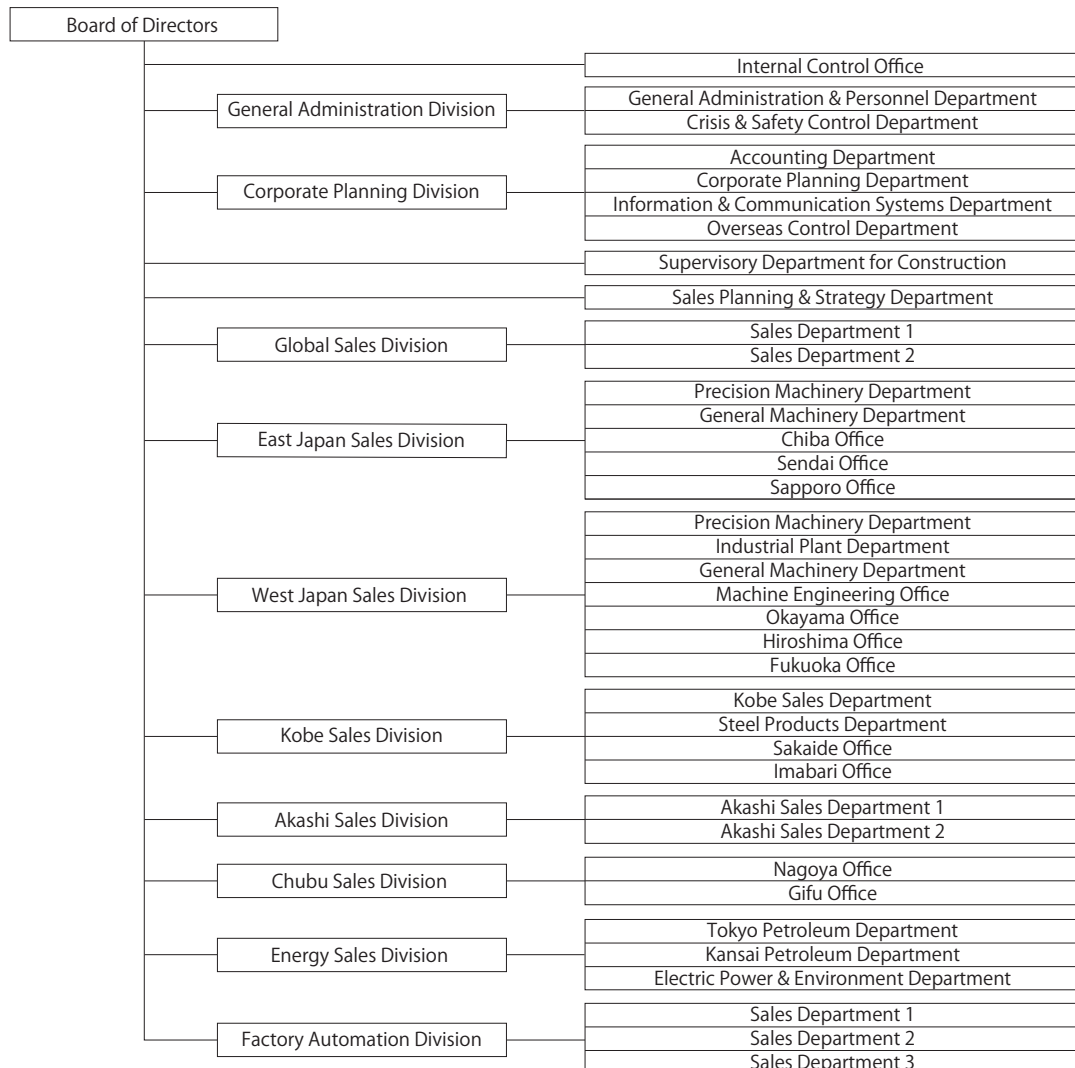


Company Data

| | |
|----------------------|---|
| Company Name | Kawasaki Trading Co., Ltd. |
| Establishment | June 28, 1951 |
| Head office | [Kobe Head Office] 3rd Floor, Shinko Bldg., 8, Kaigan-dori, Chuo-ku, Kobe, Hyogo 650-0024, Japan Tel:+81-78-392-1131 Fax:+81-78-333-4390 [Tokyo Head Office] 5th Floor, Takebashi Yasuda Bldg., 13, Kanda-nishikicho 3-chome, Chiyoda-ku, Tokyo 101-0054, Japan Tel:+81-3-6744-1000 Fax:+81-3-6744-1100 |
| President | Satoru Korai |
| Capital stock | 600 million yen |
| Sales | 85,926 million yen (result for the financial year ended March 2024) |
| Transaction Volume | 148,082 million yen |
| Contents of Business | 1. Sale, import and export of industrial equipment 2. Sale of energy and environmental products 3. Sale of steel and construction materials and products 4. Contracting of construction work 5. Aftercare services and maintenance |
| Main Shareholders | Kawasaki Heavy Industries, Ltd. Kawasaki Kisen Kaisha, Ltd. Idemitsu Kosan Co., Ltd. |
| Main Banks | Mizuho Bank, Ltd. Sumitomo Mitsui Banking Corporation MUFG Bank, Ltd. |
| Employees | 386 (as of Mar 31, 2024) |

Board Members

| | |
|--|-------------------|
| President | Satoru Korai |
| Managing Director | Ikuo Ogata |
| Director | Hirofumi Kawamura |
| Director | Akio Minami |
| Director | Takeshi Sasaki |
| Director | Masayoshi Aoki |
| Audit & Supervisory Board Member | Goro Takahashi |
| Audit & Supervisory Board Member (part-time) | Takuji Oshiro |
| Audit & Supervisory Board Member (part-time) | Kazuhsa Igaki |

Organization Chart


Kawasaki Trading Co., Ltd.
Domestic Offices

| | |
|---------------------------------|--|
| Kobe Head Office | 3rd Floor, Shinko Bldg., 8, Kaigan-dori, Chuo-ku, Kobe, Hyogo 650-0024, Japan TEL: +81-78-392-1131 FAX: +81-78-333-4390 |
| Tokyo Head Office | 5th Floor, Takebashi Yasuda Bldg., 13, Kanda-nishikicho 3-chome, Chiyoda-ku, Tokyo 101-0054, Japan TEL: +81-3-6744-1000 FAX: +81-3-6744-1100 |
| Osaka Office | 12th Floor, Seiwa Umeda Bldg., 12-7, sonezaki 2-chome, Kita-ku, Osaka 530-0057, Japan TEL: +81-6-6360-3151 FAX: +81-6-6361-2830 |
| Sapporo Office | 14th Floor, JR Tower Office Plaza Sapporo Bldg., 5, Kita-5-jo-nishi 2-chome, Chuo-ku, Sapporo, Hokkaido 060-0005, Japan TEL: +81-11-281-2677 FAX: +81-11-281-2688 |
| Muroran Office | 5-3, Kouhokucho 1-chome, Muroran, Hokkaido 050-0063, Japan TEL: +81-143-55-1051 FAX: +81-143-55-1052 |
| Mizusawa Office | 152, Shuku, Aza, Odaki, Esashi, Oshu, Iwate 023-1131, Japan TEL: +81-197-31-2950 FAX: +81-197-34-2155 |
| Sendai Office | 16th Floor, Tokyo Tatemono Sendai Bldg., 6-35, Chuo 1-chome, Aoba-ku, Sendai, Miyagi 980-0021, Japan TEL: +81-22-227-2277 FAX: +81-22-227-2196 |
| Chiba Office | 12-10, Imai 2-chome, Chuo-ku, Chiba 260-0834, Japan TEL: +81-43-261-5265 FAX: +81-43-263-4062 |
| Keihin Office | 3rd Floor, Nihon Seimei kawasaki Bldg., 1-1, Minami-machi, Kawasaki-ku, Kawasaki, Kanagawa 210-0015, Japan TEL: +81-44-221-0451 FAX: +81-44-221-0452 |
| Chita Office | 3rd Floor, Izumi Bldg., 1-4, Izumi-cho, Handa, Aichi 475-0858, Japan TEL: +81-569-22-2827 FAX: +81-569-22-7019 |
| Nagoya Office | 8th Floor, Horiuchi Bldg., 25-9, Meieki 3-chome, Nakamura-ku, Nagoya, Aichi 450-0002, Japan TEL: +81-52-586-7271 FAX: +81-52-586-7275 |
| Gifu Office | 4th Floor, Kawakyo Study Center, 17-1, Soharakoua-machi 1-chome, Kakamigahara, Gifu 504-0814, Japan TEL: +81-58-382-3530 FAX: +81-58-371-1375 |
| Machine Engineering Office | 15th Floor, Sumitomo Seimei OBP Plaza Bldg., 4-70, Shiromi 1-chome, Chuo-ku, Osaka 540-0001, Japan TEL: +81-6-6910-7551 FAX: +81-6-6910-7552 |
| Kobe Office | 5th Floor, No.3 Bldg., 1-1, Higashi-kawasaki-cho 3-chome, Chuo-ku, Kobe, Hyogo 650-0044, Japan TEL: +81-78-651-8970 FAX: +81-78-681-0009 |
| Akashi Office | 5th Floor, Nishiakashi Spot Bldg., 6-8, Matsunouchi 2-chome, Akashi, Hyogo 673-0016, Japan TEL: +81-78-922-2645 FAX: +81-78-922-7001 |
| Kakogawa Office | 753-19, Aza Imaike, Hiraoka-cho Tsuchiyama, Kakogawa, Hyogo 675-0104, Japan TEL: +81-79-420-7581 FAX: +81-79-420-7582 |
| Okayama Office | 108-2, Shinkurashiki-ekimae 1-chome, Kurashiki, Okayama 710-0253, Japan TEL: +81-86-523-5070 FAX: +81-86-523-5071 |
| Sakaide Office | 1, Kawasaki-cho, Sakaide, Kagawa 762-0062, Japan TEL: +81-877-46-3823 FAX: +81-877-46-6124 |
| Hiroshima Office | 6th Floor, JEI Hiroshima Hacchobori Bldg., 14-4, Hacchobori, Naka-ku, Hiroshima 730-0013, Japan TEL: +81-82-212-0250 FAX: +81-82-211-5600 |
| Sanin Office | 6th Floor, International Family Plaza, 180, Kamocho 2-chome, Yonago, Tottori 683-0823, Japan TEL: +81-859-23-3111 FAX: +81-859-23-3112 |
| Imabari Office | 6th Floor, Maemi Bldg., 5-3, Kitahorai-cho 1-chome, Imabari, Ehime 794-0028, Japan TEL: +81-898-22-6122 FAX: +81-898-33-2281 |
| Fukuoka Office | 5th Floor, Hakata FD Business Center, 2-1, Tsunaba-machi, Hakata-ku, Fukuoka 812-0024, Japan TEL: +81-92-260-9926 FAX: +81-92-260-9927 |
| Remote Information Center (RIC) | 1st Floor, As One Higashi-Kamata Residence, 21-15, Higashi-Kamata 1-chome, Ota-ku, Tokyo 144-0031, Japan TEL: +81-3-6744-1007 FAX: +81-3-6744-1004 |

Overseas Offices

| | |
|--------------------|--|
| Manila Office | Room 817 Peninsula Court Bldg., 8735 Paseo de Roxas corner Makati Avenue Makati City 1226, The Philippines TEL: +63-2-8869-0947 |
| Hong Kong Office | 22nd Floor, Redana Centre, 25 Yiu Wa Street, Causeway Bay, Hong Kong TEL: +852-2812-0004 FAX: +852-2812-2281 |
| Kaohsiung Office | Room A1, 4th Floor, 6 Swei 3rd Road, LingyaChiu, Kaohsiung 802, Taiwan TEL: +886-7-330-0937 FAX: +886-7-330-0940 |
| Ho Chi Minh Office | Room C-15, 25th Floor, Lim Tower, 9-11 Ton Duc Thang Street, Ben Nghe Ward, District.1, Ho Chi Minh City, Vietnam TEL: +84-28-3821-0872 FAX: +84-28-3821-0873 |
| Singapore Office | Kawasaki Heavy Industries (Singapore) Pte. Ltd. 6 Battery Road, #17-02, Singapore 049909 TEL: +65-6225-5133 FAX: +65-6224-9029 |
| Detroit Office | 39111 Six Mile Road, Livonia, Michigan 48152, USA TEL: +1-734-779-1885 |

Kawasaki Trading (Shanghai) Co., Ltd.

Overseas Subsidiaries

| | |
|----------------|--|
| Head Office | Room 1003B, Chong Hing Finance Center, No.288 Nanjing Road West, Shanghai 200003, China TEL: +86-21-3366-3700 FAX: +86-21-3366-3701 |
| Dalian Office | Room 319, No.712-5 Shunle Street, Lvshun Economic Development Zone, Dalian 116052, China |
| Nantong Office | Room 2707-2708, Phoenix Cultural Plaza Bldg. 2, No.6 Xinchenqu Branch Slip Rd, Chongchuan District, Nantong 226004, China TEL: +86-513-8558-0979 FAX: +86-513-8558-0379 |

Kawasaki Trading (Thailand) Co., Ltd.

Overseas Subsidiaries

| | |
|-------------|---|
| Head Office | 1 Park Silom Tower, 15th Floor, Room 1502, Convent Road, Silom, Bangrak, Bangkok, 10500, Thailand TEL: +66-2-124-5623 +66-2-077-5822 |
|-------------|---|

Kawasaki Green Energy Co., Ltd.

Domestic Affiliated Company

| | |
|-------------|---|
| Head Office | 1-1, Higashikawasaki-cho 3-chome, Chuo-ku, Kobe, Hyogo 650-8670, Japan TEL: 078-682-5227 FAX: 078-682-5533 |
|-------------|---|